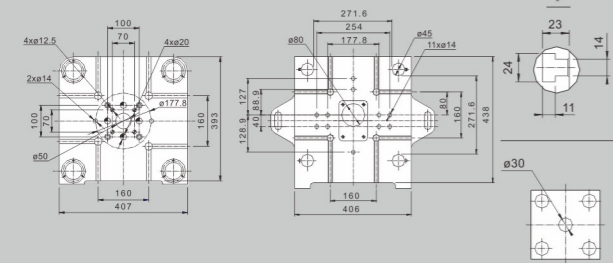
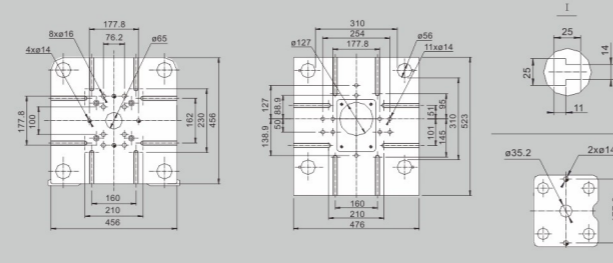




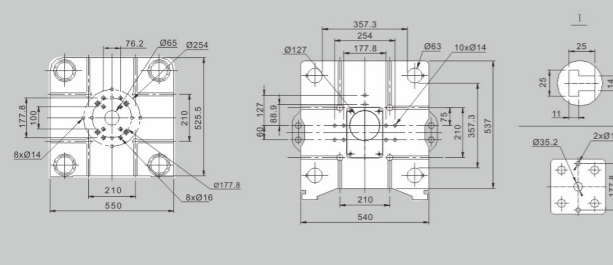
DC30



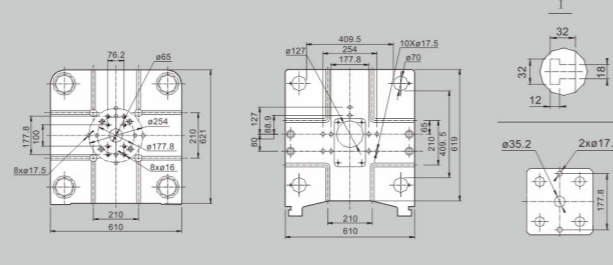
DC50



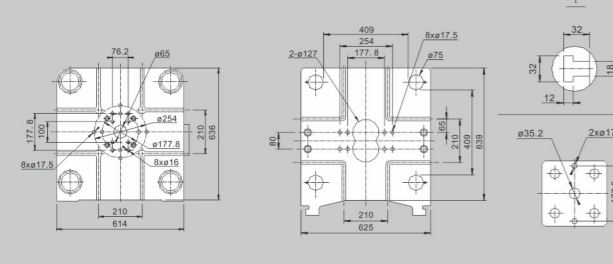
DC88



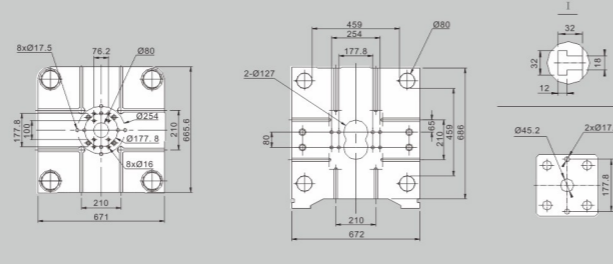
DC100



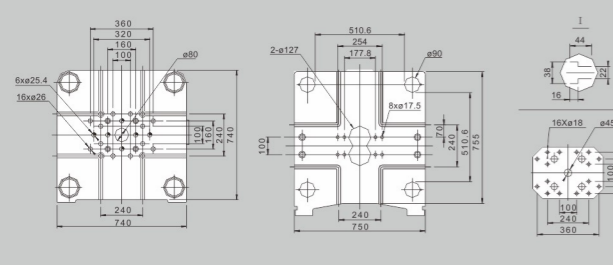
DC130



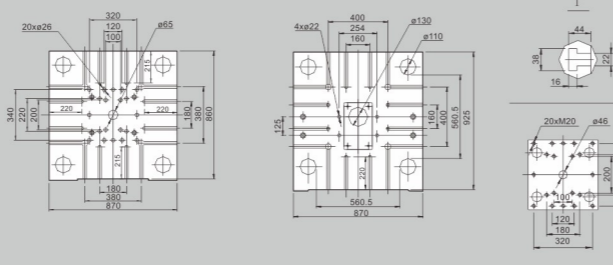
DC160



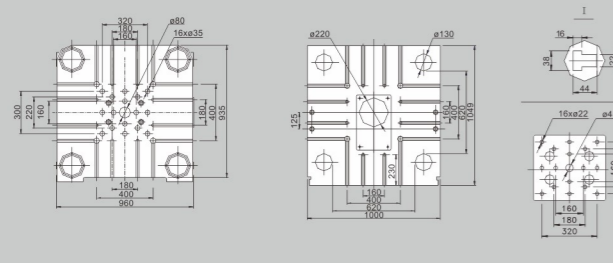
DC200



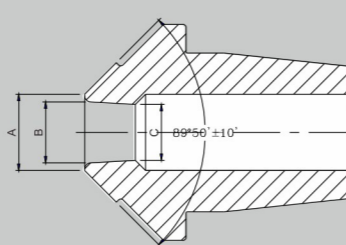
DC280



DC400



NOZZLE HEAD



• We reserve the right to make any technical improvement without further notice.



Head Office Add.: Unit A, 8th Floor, Mai Wah Industrial Building,
1-7 Wah Sing Street, Kwai Chung, New Territories, Hong Kong
Tel: (852) 3412 5500 Fax: (852) 3412 5511
Website: www.lk.world
E-mail: sales@lkmachinery.com.hk



WECHAT



Corporate Website

Sales Contact :

CAT.NO.E190705

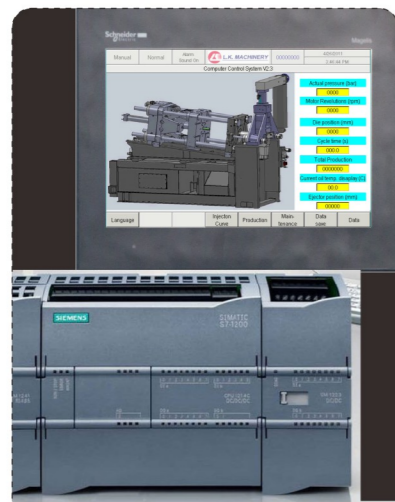
AVIS-II

HOT CHAMBER DIE CASTING MACHINE

AVIS-II series

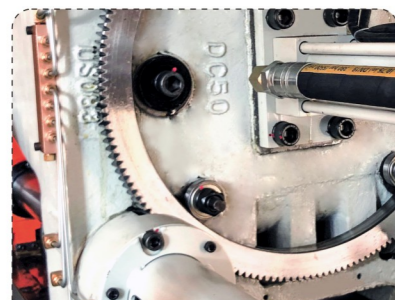
HOT CHAMBER DIE CASTING MACHINE

The first AVIS hot chamber die casting machine was produced in 1994 representing high quality, professional and high efficiency die casting. AVIS-II has more high standard features with latest technology, which are able to fulfill high requirements on die casting industry nowadays. Thousands of AVIS and AVIS-II machines are now serving different customers worldwide and AVIS-II will be a partner for success.



Control System

Advanced PLC with large size touch LCD ensures reliable and easy operation.



Strong Casting Platen

with gear type hydraulic driven die height adjust mechanism, makes clamping unit durable and remarkable for die-casting.



Energy Saving Servo Pump
Advanced servo technology in pump system provides up to 50% energy saving.



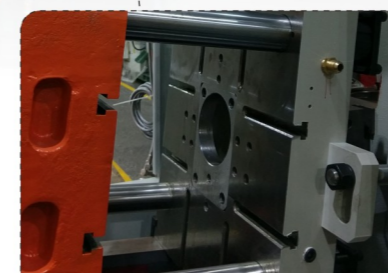
Centralized automatic toggle lubrication system

Ensures fixed volume of lubricant is delivered to each toggle moving joint, result in a long working life and reduce maintenance.



Professional Injection system

Equips with piston type accumulator and proportional injection control, the injection can achieve 5 m/s or above with two stage speed control and easy injection setting.



Multi shot-position

Offers more flexibility for die design and production, fits nowadays production model.

Standard features

- Safety doors
- Hydraulic ejector
- Hydraulic nozzle engagement
- Electrical heating nozzle, gooseneck
- Electrical heating furnace



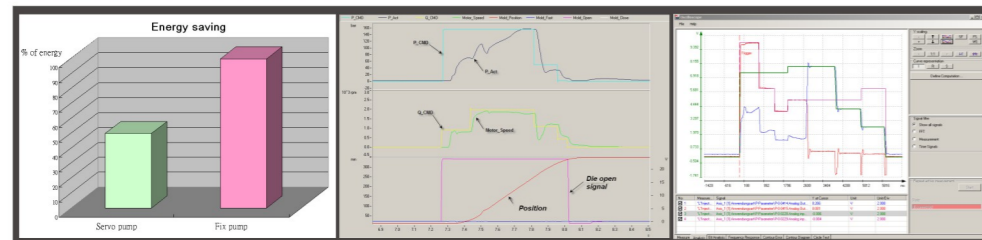
Operation is more easy and more user-friendly

The AVIS-II has equipped with 10" touch LCD, allow operator to work more easy, and lots of data are available on the screen which are required by nowadays high requirement production and process control.



Excellent hydraulic system with proportional pressure and flow control for best performance

ENERGY SAVING

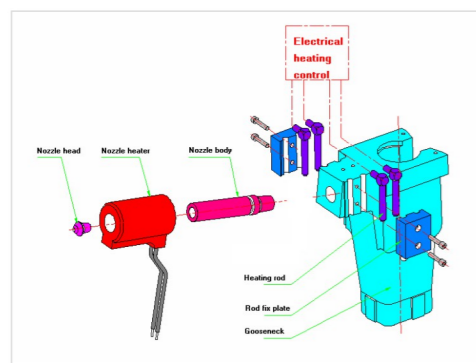


Thanks to the advanced servo technology, the new servo pump system is more reliable with good performance, saving up to 50% energy. It contributes to less production cost as well as more environmental friendly.



High efficient tubular type heat exchanger is equipped on the AVIS-II can avoid blockage of cooling water channels and hence reduce maintenance.

PROFESSIONAL



Professional injection system with electrical heating nozzle and gooseneck ensures quality castings and long working life.



Fix spraying nozzles (Option) are effective tool for good casting.

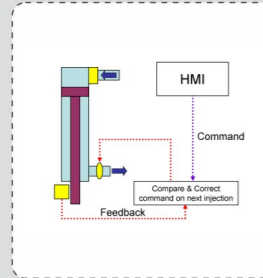


ITEM	CLASSIC-III	AVIS-II
Control	7" LCD	10" LCD
Gear type die height adjustment	Standard	Standard
Hydraulic ejector	Standard	Standard
Hydraulic nozzle engaging	Standard	Standard
Piston type accumulator	Standard	Standard
Accumulator charging pressure setting	Analogue	Analogue
Die opening stroke control	Analogue	Analogue
Pump	Fixed Pump	Energy Saving Servo Pump
Fixed spraying nozzle	Option	Option
Standard furnace	Diesel Furnace	Elec. Furnace
Core pulling	Std for DC130 or above	Std for DC50 or above
Pneumatic Sweeper	Option	Option
Injection Speed control	Hand wheel	Proportional Control
Injection curve display	Option	Standard

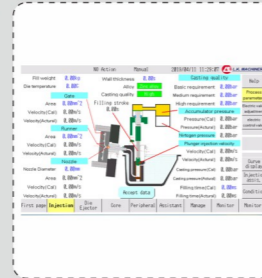
OPTIONS



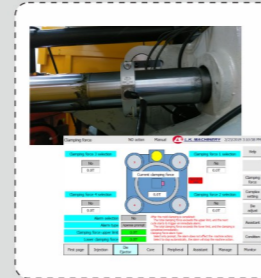
Professional HMI Siemens 9" or 12" Touch LCD and SPC function



LK Smart Injection Control System



Smart Process Assistance



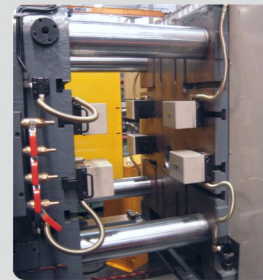
Clamping force display



Air Conditioner for the control cabinet



Pneumatic Sweeper for casting removal



Quick Die Change System



Gas or Diesel heating furnace replace electrical furnace



Furnace safety guard



US CE

U.S./CE Standards

- Extra Core pull
- Auto Safety door
- Smart Die Height Adjustment
- Separate plate for furnace
- Double chamber furnace
- LK Net System

Additional Options

PERIPHERALS



Automatic Ingot loader



Automatic Extractor



Automatic Servo Linear extractor with sprayer



Automatic Servo Linear Sprayer



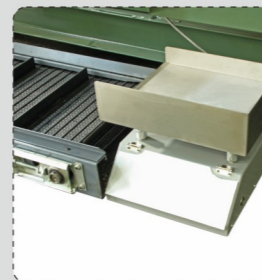
Hydraulic Trim Press (Able to interface with Robot Arm)



Automatic Portering system (central furnace)



Conveyor



Electrical casting scale



6-Axis extracting robot with gripper



Auto Die Lubricant Dilutor

AVIS-II SERIES SPECIFICATION

ITEM	UNIT	CLAMPING UNIT																							
		DC30	DC50	DC88	DC100	DC130	DC160	DC200	DC280	DC400															
Locking force	kN	300	500	880	1000	1300	1600	2000	2800	4000															
Die opening stroke	mm	180	230	280	300	350	350	400	460	550															
Die height (min-max)	mm	100-310	120-340	150-350	150-450	170-450	205-505	250-550	250-650	300-750															
Platen size (H x V)	mm	407X393	456X456	550X525	610X621	614X636	671X666	740X740	870X870	960X965															
Space between tie bars	mm	271.6X271.6	310X310	357X357	409X409	409X409	459X459	510X510	560X560	620X620															
Ejector force	kN	30	50	50	70	88	108	108	158	180															
Ejector stroke	mm	50	60	60	70	85	85	100	100	120															
Injection force	kN	40	52	65	89	108	108	130	158	182															
Injection stroke	mm	110	130	130	150	150	150	175	200	230															
Plunger diameter	mm	36	40	45	45	50	55	45	50	55	55	60	60	65	60	65	70	60	65	70	70	80	70	80	90
Shot weight (Zn)	kg	0.55	0.68	0.87	1.0	1.26	1.53	1.0	1.26	1.53	1.76	2.1	2.1	2.4	2.1	2.4	2.86	2.5	2.9	3.3	3.8	5.0	4.4	5.7	7.2
Casting pressure	MPa	39.5	32	25.3	32.7	26.4	21.8	42	34	28.1	37.4	31.5	38.9	33.1	38.9	33.1	28.6	47	40.1	33.7	41	31.4	48.2	36.9	29.2
Casting area	cm ²	75.9	93.7	118.5	152	189	229	209	258	313	267	317	334	392	411	483	559	425	498	593	681	888	829	1084	1369
Shot position	mm	0	-40	0	-50	0	-60	0	-80	0	-80	0	-80	0	-80	0	-100	0	-100	0	-125	0	-125	0	-125
Nozzle traverse stroke	mm	150	190	190	200	200	200	200	200	200	200	200	200	200	200	200	200	200	200	200	200	200	200	200	340
Hydraulic working pressure	MPa	8	10.5	10.5	14	14	14	14	14	14	14	14	14	14	14	14	14	14	14	14	14	14	14	14	14
Hydraulic oil tank capacity	L	200	200	250	300	300	300	300	300	300	300	300	300	300	300	300	300	300	300	300	300	300	300	300	300
Nozzle heating	kW	1.5	2	2	2.5	2.5	2.5	2.5	2.5	2.5	2.5	2.5	2.5	2.5	2.5	2.5	2.5	2.5	2.5	2.5	2.5	2.5	2.5	2.5	2.5
Furnace capacity (zn)	dm ³ (kg)	40(260)	50(330)	50(330)	55(360)	55(360)	55(360)	55(360)	55(360)	55(360)	55(360)	55(360)	55(360)	55(360)	55(360)	55(360)	55(360)	55(360)	55(360)	55(360)	55(360)	55(360)	55(360)	55(360)	55(360)
Furnace power	Electricity	kW	26	30	30	30	42	30	42	30	42	30	42	30	42	30	42	30	42	30	42	30	42	30	42
	Diesel	kg/h	3.5	4.8	4.8	4.8	4.8	4.8	4.8	4.8	4.8	4.8	4.8	4.8	4.8	4.8	4.8	4.8	4.8	4.8	4.8	4.8	4.8	4.8	4.8
Machine dimension (LxWxH)	mm	3820×1630×1870	3930×1700×2150	4080×1700×2010	4980×1640×2230	5040×1695×2230	5060×1790×2230	5700×1870×2470	6250×1900×2530	6850×2250×2890															
Machine weight	kg	2600	3400	4000	5500	5700	6000	7800	11000	17500															

OPTION

* We reserve the right to make any technical improvement without further notice. The machine dimension does not include control cabinet.

CAT.NO.E190705